



CLEMDE

Clemde, creators of fine prosthodontics products and manufacturing systems.

Partial Flex[®]

Lithium^{YZR}

EZ MODELING[®]

LUSTRE COLOR KIT
Lithium^{YZR}

PF KEEP[®]

CATALOGUE



AL SERVICIO DE LABORATORIOS DENTALES EN TODO EL MUNDO
SINCE
1999



WHO ARE WE?

CLEMDE is a 100% Mexican company. We manufacture and distribute materials and devices for the prosthetic dental industry. Additionally, we provide our clients with training courses in the practical, and responsible use of all our products, and processes. CLEMDE counts on nearly 23 years of operating experience in the international dental market.

HISTORY

CLEMDE is a leader in supplying the international dental market. Founded in 1999, in Mexico City, CLEMDE always looking for both quality and continuous improvement. We have international certificates and scientific studies which validate the reliability and safety of our products and manufacturing processes. We are a multi-brand company, with a catalogue featuring over 200 products.

MISSION

To make available to our customers the best possible products with the best possible quality. To carry out constant self-improvement and research in order to contribute to the technological development of the dental industry.

VISION

To continue evolving dentistry, so that through our materials and innovative technology, we can provide the client with processes that are simple, guaranteed, and trustworthy.

INDEX

Partial Flex®

4-18

Lithium^{YZR}

19-27



28-30



31-37

EZ MODELING®

38-40

3D CLEMDE

41

Partial Flex®



Partial Flex®
Black Furnace Pro

By Clemde

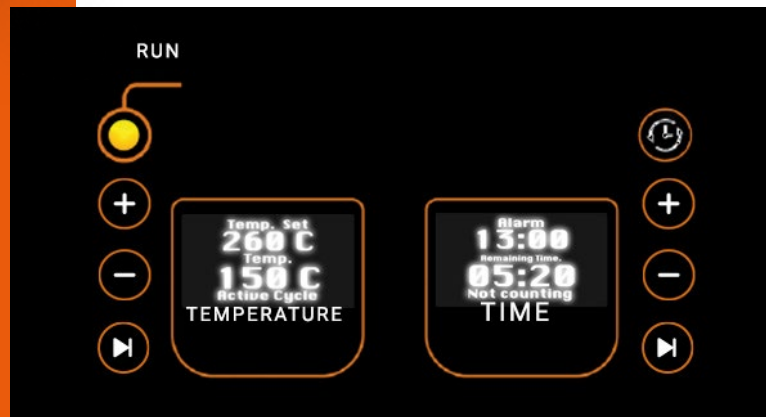




Digital Partial Flex® Furnace

The Digital Partial Flex® Furnace is an electrical device, operated via digitalized controls. Offered the best and latest technology in the thermo processing of molding resin, users can optimize energy levels while controlling temperatures and times.

ITEM: 300047



TECHNICAL SPECIFICATIONS

- Temperature range: 0° C - 400° C (32° F - 575° F)
- Electrical specifications: 110 V | 400 W / 5 A and 220 V | 400 W / 5 A
- Exterior dimensions: 14.4 cm width x 11 cm length x 27 cm height (4.3 " width x 5.9 " length x 8.5 " height)
- Display screen for temperature programming
- Display screen for time programming
- Timer alarm
- Temperature alarm
- 2.3 kg weight (5 lbs)





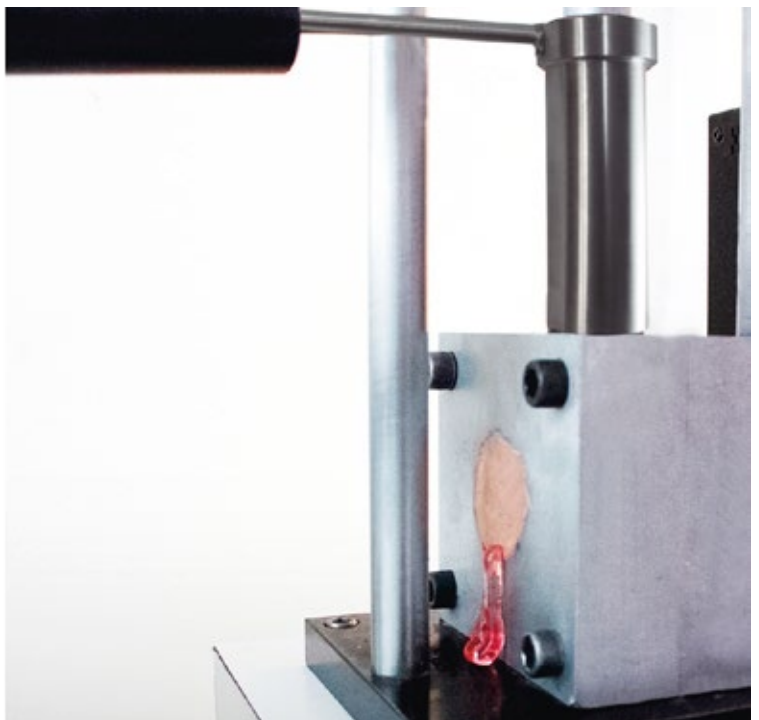
Partial Flex® Manual System

Manual molding injection machine, made with aluminum and stainless steel.

FEATURES

- Approximate weight: 10 kg (22 lbs)
- Exterior dimensions: 18 cm width x 18 cm length x 52.5 cm height (7.1 " width x 7.1 " length x 20.6 " height)
- Torque capacity: 1,800 kg (3968 lbs)
- Non Corrosive
- Slip-resistant handwheels

ITEM: 300001





Partial Flex® Cartridges

It's a random copolymer, specially formulated for the injection molding of Partial Flex® partial prostheses. Derived from a chemical group known as olefins, it results in a composite of great thermoplastic molding capacity. Its end products are flexible, ultraresistant against impact, highly translucent, biocompatible, hypoallergenic, and 100% nontoxic for use in human therapy. Each Tube contains 27 g (0.95 oz) of Partial Flex® molding resin.

The advantages and safety of Partial Flex® molding resin are backed up by numerous studies, including those conducted by:

- Toxikon Safety Europe N.V. (Belgium), for biocompatibility
- Laboratories of Immunological Specialties (LEI, Mexico City), for biocompatibility
- ISO 13485:2016, for quality in manufacturing
- The International University of Catalonia (UIC, Barcelona), for clinical performance
- Nordic Institute of Dental Materials (NIOM, Oslo), for flexural functionality



Partial Flex® Cartridges

Besides providing a certificate of authenticity for each Partial Flex® Cartridge, we also ship it enclosed in a sealed hygienic bag, ensuring a satisfactory delivery – the first step toward creating a Partial Flex® structure.



Six Distinctive Tones

Label	Tone	Recommended Thermoplastification Run-time
	Light ITEM: 300073	13 min.
	Standard ITEM: 300076	13 min.
	Mix ITEM: 300074	13 min.
	Dark ITEM: 300079	13 min.
	Natural ITEM: 300078	60 min.
	Chromatic ITEM: 300075	20 min.

What are the benefits of a Partial Flex® prosthesis?

- They are nylon-free
- They do not contain Bisphenol A
- Their colors never fade
- They do not absorb or trap humidity
- They represent a safe alternative for patients allergic to acrylic
- They are highly translucent
- They are ultralight

Physical Properties

- Aqueous absorption: 1.2 µg/mm³
- Solubility: 0.04 µg/mm³
- Maximum stress intensity factor: 2.4 MPa/m²
- Total fracture work: 16,209 J/m²
- Ultimate flexural strength: 28 σ MPa
- Flexural modulus : 776 MPa
- Color stability: Stable



Seal flex

A sealing polymer presented in gel form, designed to prevent flexible resin from sticking to plaster.

Suggested use:

apply only to a plaster surface, brushing on 2 or 3 layers. It is essential to let Seal Flex dry completely before applying a fresh layer, to prevent staining or residue buildups.



ITEM: 300029

Characteristics:

- Contents: 130 g (4.6 oz)
- A transparent gel
- Drying time: 10 minutes

Molding flex

Partial Flex® Mold Release agent is a silicone (polysiloxane) spray that is applied to the Cartridge Holder cylinder, the injection plug, and Partial Flex® Cartridge, before introducing into oven.

Characteristics:

- Contents: 200 g (7.0 oz)
- Gaseous state
- Use at temperatures no higher than 400° C (752° F)
- Flammable

ITEM: 300005





FLASK BLACK (large-sized)

- Recommended for large or multiple injection cases.
- Made of anodized aluminum
- Exterior dimensions: 118 mm width x 107.7 mm length x 68.58 mm height (4.65 " width x 4.24 " length x 2.70 " height)
- Internal capacity: accommodates up to 500 g (17.6 oz) of plaster

ITEM: 300003



FLASK BLACK (standard-sized)

- Recommended for regular-sized cases or multiple-injection of medium or small-sized cases.
- Made of anodized aluminum
- Exterior dimensions: 105 mm width x 105 mm length x 72.39 mm height (4.13 " width x 4.13 " length x 2.85 " height)
- Internal capacity: accommodates up to 430 g (15.2 oz) of plaster

ITEM: 300004

EMPTY TUBES

The empty tubes are made of aluminum, to meet the demand of the flexible's market, the tubes have a standard size that is compatible with our cylinder carrying white handle cartridges and with other brands of existing ovens.

The tube comes in two presentations according to its content of 22 and 25 grams respectively, both presentations include a lid made of aluminum with the measure ideal to be able to adjust to the tube.

The caps can be used for the división of Partial Flex® tubes, in order to make better use of the material in the injections and not waste the rest.



POLISHING KIT

ITEM: 300024

Partial Flex® offers the only injection molding system in the restorative dental market whose end products do not require any special polishing pastes or liquids. You need follow only five steps to create a bright, lifelike prosthesis. However, this optimal finish is not guaranteed without the use of the following aids:

1. Partial Flex® Felt disc



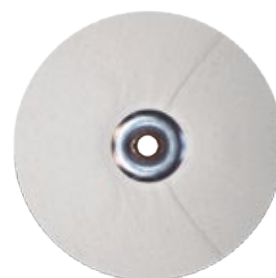
A rotary disc made of synthetic fiber, used in the first step in smoothing the surface of the prosthesis under development.

2. B20 Brush



A rotary disc made of black synthetic bristles, used in the second step in the working of a Partial Flex® prosthesis. It is mainly for hard-to-reach areas.

3. Polishing Buffer



A four-inch rotary disc made of multiple cotton layers, used in the third step in polishing a Partial Flex® prosthesis. The use of crystalline silica grit (60-100 micron) is recommended.

4. White Brush



A rotary disc made of natural bristles, used in the fourth step in finishing a Partial Flex® prosthesis: initial buffing.

5. Shine Buffer



A rotary disc made of multiple muslin layers, used in the fifth and final step in polishing a Partial Flex® prosthesis: fine buffing.





Air Flow Flex® Blow-Torch burner

Portable combustion tool used for doing fine repairs on flexible prostheses, a feature of the Partial Flex® technique.

ITEM: 300028

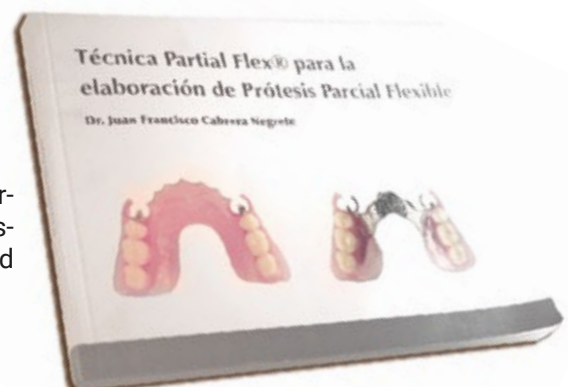
Advantages

- Does not produce a flame
- Does not burn flexible material
- Activates exclusively with butane gas

Partial Flex® Book

A comprehensive manual which describes step-by-step the Partial Flex® method to creating removable, flexible partial prostheses. Includes designs for both traditional metal and hybrid models. Contains 200 pages, most with illustrations in color.

ITEM: 300031





Black handled Cartridge Holder Cylinder

ITEM: 300033

An accessory made of steel, the Holder is used to insert a single cartridge into the Partial Flex® Black Digital Furnace. It is resistant to high temperatures, and is never deforming, so as to allow for a hassle-free thermoplastification of the resin. It works with an injection stopper. This Cartridge Holder is specially designed to work with Partial Flex® Cartridges, as its internal diameter allows for a perfect coupling.



White handled Cartridge Holder

ITEM: 300086

An accessory likewise made of steel, this Holder also inserts a single Cartridge into the Partial Flex® Black Digital Furnace. Resistant to high temperatures, it also never deforms, and permits for a perfect thermoplastification. This model has an injection stopper as well. The difference is that this Cartridge Holder has an adjuster, designed to couple with cartridges of varying internal diameters.



Cartridge Ejector

This aluminum accessory functions as a support column for the placing of the Cartridge Holder, and facilitates the easy removal of a spent Cartridge.

ITEM: 300034



Injection stopper

An aid to pushing the Cartridge during its injection. It is made of a special bronze alloy, comes in two different presentations, with a diameter of 25.08 mm ideal for our black handled cartridge holder cylinder and with a diameter of 25.78 mm for the white handled cartridge holder cylinder.

ITEM: 300027



New Flask

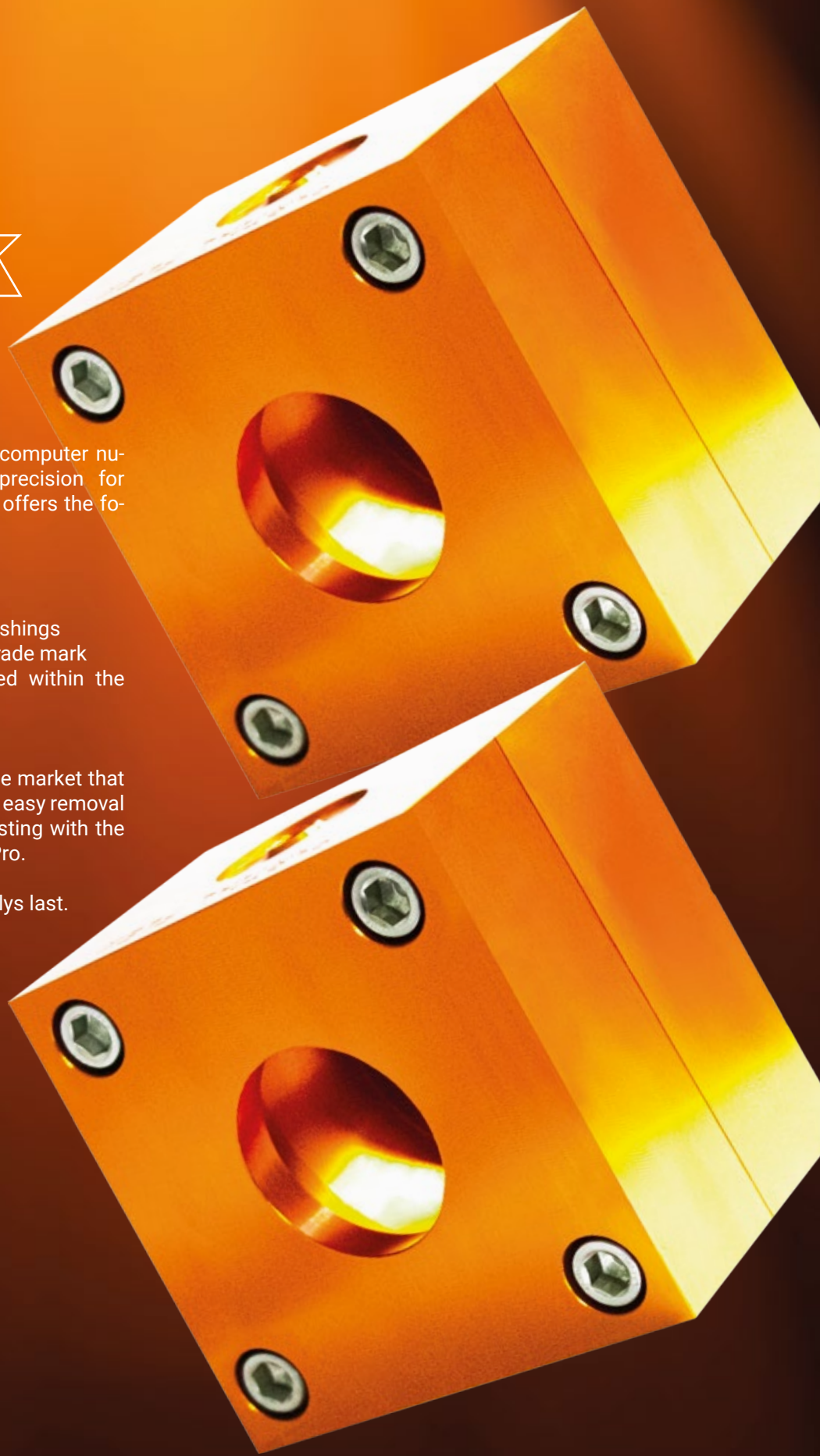
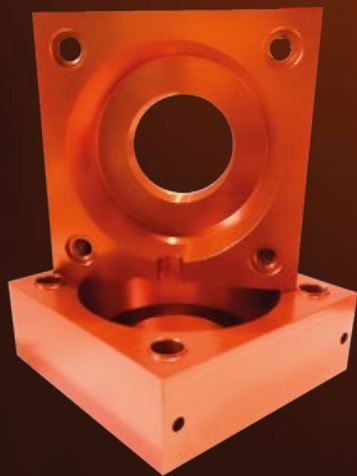
Designed under the CNC System (computer numerical control) unprecedented precision for the final outcome is guaranteed. It offers the following characteristics:

- 100% aluminum
- Anodized
- High-precision interconnecting bushings
- Identifiable by the Partial Flex® trade mark
- Stainless steel screws concealed within the flask
- Perfect fittings

This is the only flask available in the market that provides interior angles to facilitate easy removal and pins oriented for a perfect casting with the manually-operated Black Furnace Pro.

Special edition, available until supplies last.

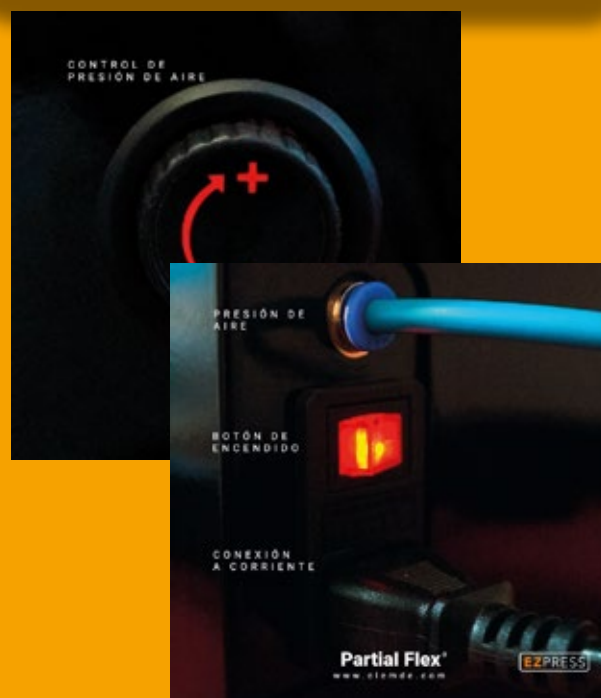
ITEM: 900101



EZPRESS

ITEM: 300152

The EZ Press® with integrated curing oven is designed for easy injections, with just the push of a button. It counts on two injection controls, for times and temperatures, both of which are programmable using the display screen. This also has a manometer for monitoring pressure, and indicators which show the current operating time and temperature.



TECHNICAL SPECIFICATIONS

Electrical specifications: 110 V | 400 W / 60 Hz and 220V | 330 W | 1.5 A

Exterior dimensions: 24 cm width x 19 cm length x 77 cm height

(9.45 " width x 7.48 " length x 30.31 " height)

Number of programs: 2 (manual and automatic)

Maximum pressure: 7 bar

Temperature range: 0° C - 400 °C (32 °F - 752 °F)





EZPRESS

ITEM: 900068

EZ PRESS Touch & Press

The new EZ PRESS Touch & Press machine is designed with high technology, ideal for greater accuracy in reading time and temperature, the new touch screen allows you to have exact control of injection parameters such as time, temperature and pressure.

This version of the EZ PRESS® machine allows you to inject different types of materials such as Partial Flex® or AcriPress acrylic, in the same way, it isn't necessary to have a sealed tube to be able to install any of these materials.

TECHNICAL SPECIFICATIONS

- Electrical specifications: 110 V | 400 W / 60 Hz and 220V | 330 W | 1.5 A
- Exterior dimensions: 26 cm width x 18.9 cm length x 75 cm height (10.26 in width x 7.42 in length x 29.52 in height)
- Number of programs: 1 (manual)
- Maximum pressure: 7 bar
- Temperature range: 0° C - 400 °C (32 °F - 752 °F)



3D PRINTING PARTIAL FLEX® FILAMENT

The 3D filament is a presentation of the original copolymer of Partial Flex®, it is a thermo-plastic resin dental filament designed to meet the needs of the market for all laboratories that have a 3D printer, retaining the main properties of Partial Flex®.

Forget about plaster. Model and design your prosthesis from a computer, print and achieve the perfect shine with the steps you already know.

The 3D filament is available in a spool presentation of 250 grams with a diameter of 1.75 or 2.85 mm according to the requirements of the 3D printer, temperature can be changed during its driving time from 235° to 260° C (455° to 500° F).

Available in 6 shades:

- (L) Light
- (S) Standard
- (D) Dark
- (N) Natural
- (M) Mix
- (C) Chromatic

ITEM: 300061



Partial Flex® LOW SPEED MICROMOTOR



ITEM: 200010

Up to 10,000 revolutions per minute
Adjustable speed



Lithium YZR[®] SYSTEM

ITEM: 800048

The Lithium YZR[®] System is both dynamic and accessible, designed for creating dental restorations based on lithium disilicate glass-ceramic. This work is done in combination with the pneumatic PF KEEP[®] Press and Lithium YZR[®] dewaxing furnace, D Waxing PRO 2.0. An injection free of any fractured outcomes is guaranteed.



D-Waxing Pro Touch Screen Furnace

The innovative design of the D Waxing Pro Touch Screen Furnace allows greater pressure in the rise of time and temperature, in addition to the control of alarms.

It maintains the power button for convenience and control of the furnace, plus the new size allows a better heat insulation within the internal chamber.

ITEM: 800112



TECHNICAL SPECIFICATIONS

- Electrical specifications: 110 V | 1200 W | 15 A and 220 V | 1782 W | 8.1 A
- Exterior dimensions: 29.2 cm width x 30.92 cm length x 38.2 cm height (11.5" width x 12.19" length x 15" height)
- Maximum temperature: 999 °C (1830 °F)
- Capacity: 8 ladles of 1 ¾ inches or 2 ladles of 3 inches
- Temperature increase: 14 °C - 17 °C/minute (57.2 °F - 62.6 °F/minute)

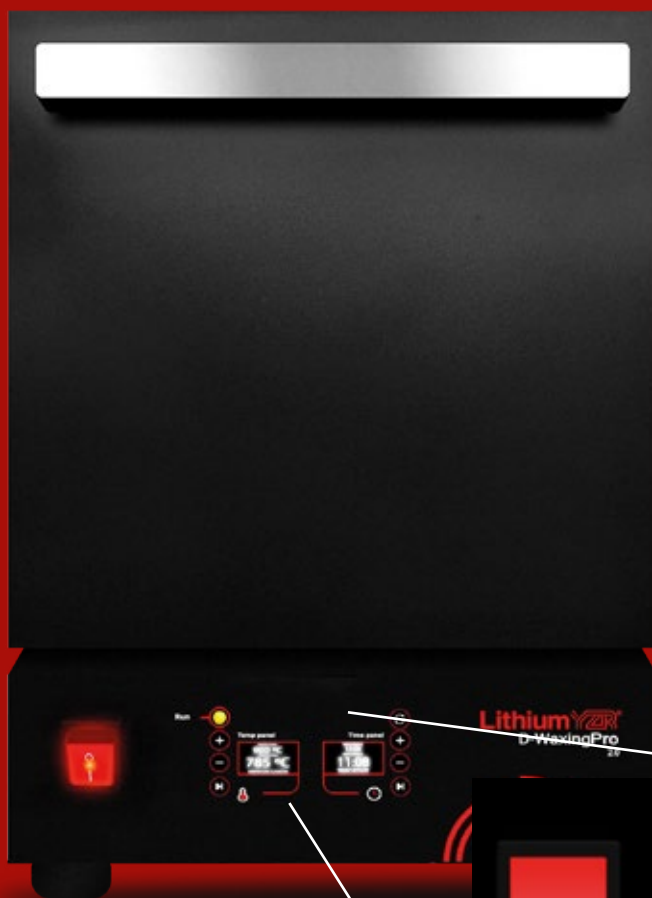


Lithium YZR® Dewaxing Furnace: the D Waxing PRO 2.0

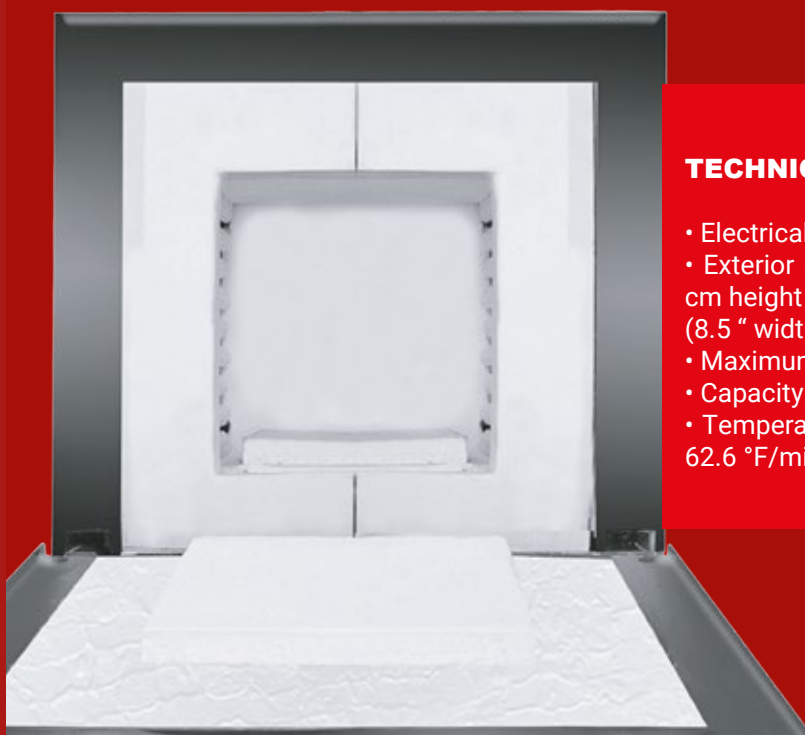
This dewaxing furnace is designed with total optimization in mind, from energy consumption to heating times.

FEATURES

- Electrical specifications: 110 V | 1200 W | 15 A and 220 V | 1782 W | 8.1 A
- Exterior dimensions: 27 cm width x 27 cm length x 37.6 cm height (8.5 " width x 8.5 " length x 14.8 " height)
- Maximum temperature: 999 °C (1830 °F)
- Capacity: 8 ladles of 1 ¾ inches or 2 ladles of 3 inches
- Temperature increase: 14 °C - 17 °C/minute (57.2 °F - 62.6 °F/minute)



ITEM: 800082



TECHNICAL SPECIFICATIONS

- Electrical specifications: 110 V | 1200 W / 15 A
- Exterior dimensions: 27 cm width x 27 cm length x 37.6 cm height (8.5 " width x 8.5 " length x 14.8 " height)
- Maximum temperature: 999 °C (1830 °F)
- Capacity: 8 ladles of 1 ¾ inches or 2 ladles of 3 inches
- Temperature increase: 14 °C - 17 °C/minute (57.2 °F - 62.6 °F/minute)



Lithium YZR® Ingots

Lithium YZR® ingots represent an innovative concept, as they are constituted of a chemical mixture of diverse mineral compounds. Silica oxide is the main ingredient (70%). The rest is composed of lithium dioxide, potassium oxide, zirconium oxide, zinc oxide, aluminum oxide, magnesium oxide, and other microfillers. Its safety has been backed up by biocompatibility studies conducted by Suzhou University (Taipei), while the Nordic Institute of Dental Materials (Oslo) has verified its flexural functionality.



- Ingots density: 2.4-2.6 g/cm³
- CTE - coefficient of thermal expansion: (25° C - 500 °C) 8.5 – 11.0 x 10⁻⁶ K⁻¹
- Posterior biaxial resistance while sintered: 400 ± 60 MPa
- Vickers hardness test: 5800 ± 400 Mpa
- Chemical solubility while sintered: < 100 µg/mm³
- Press temperature: 915 °C - 935 °C (1679 °F - 1715 °F)
- Ingots diameter: 13 mm
- Ingots height: 10 mm

TRANSLUCENCE	APPLICATIONS	COLORS
HT (high translucence)	Recommended for inlays and veneers	A1, A2, A3 and B1, B4
LT (low translucence)	Used for copings and full crowns	A1, A2, A3 and B1, C1, C2
MO (medium or average opaqueness)	Used for anterior copings and bridges (3-unit maximum) when indicating ceramic stratification upon these structures	MO1
BL (whitening)	Useful for obtaining high-chromatic colors, like bleached teeth	BL1, BL2

**400 MPA OF
COMPRESSION
STRENGTH!**



Temperature Table

Initial temperature	800 °C (1472 °F)
Temperature increase	60 °C/minute (140 °F/minute)
Final temperature	935 °C (1715 °F)
Holding time	15 minutes
Pressing time	1 minute



- ITEM
- 800086 HTA1
 - 800087 HTA2
 - 800088 HTA3
 - 800089 MO1
 - 800090 HTB1
 - 800091 LT BL1
 - 800092 LT BL2
 - 800093 LTA1
 - 800094 LTA2
 - 800095 LTA3
 - 800096 LTB1



Lithium YZR® Blocks

Lithium YZR® lithium disilicate blocks are ideal for the making of dental restorations and compatible with every CAD/CAM system in the market.



Block B40

- Large-sized: 15 mm width x 17 mm length x 38 mm height (0.59 " width x 0.67 " length x 1.5 " height)
- Available tones: HT – A1, A2, A3; LT - A1, A2, A3, B1, B2; BL1, BL2

Block B18

- Medium-sized: 15 mm width x 17 mm length x 40 mm height (0.59 " width x 0.67 " length x 1.57 " height)
- Available tones: HT – A1, A2, A3; LT - A1, A2, A3, B1

PHYSICAL AND FLEXURAL PROPERTIES

- Flexural resistance: 400 Mpa
- Chemical solubility: < 100 µg/ mm³
- Coefficient of thermal expansion: 8.5 – 11.0 x 10⁻⁶ K⁻¹

RECOMMENDED PARAMETERS FOR CRYSTALLIZATION



Drying time _____	6 minutes
Inlet temperature _____	400 °C (752 °F)
Temperature increase _____	50 °C / minute (122 °F/minute)
Final temperature _____	850 °C (1562 °F)
Dwelling time _____	10 minutes
Chart below _____	700 °C (1292 °F)
Vacuum inlet _____	550 °C (1022 °F)
Vacuum outlet _____	840 °C (1544 °F)



ITEM	
800027	BLOQUE LITHIUM B18 LTA1
800028	BLOQUE LITHIUM B18 HTA1
800029	BLOQUE LITHIUM B18 LTB1
800030	BLOQUE LITHIUM B18 HTA2
800031	BLOQUE LITHIUM B40 LTA1
800032	BLOQUE LITHIUM B40 HTA1
800033	BLOQUE LITHIUM B40 HTA2
800034	BLOQUE LITHIUM B40 LTA2

ITEM	
800035	BLOQUE LITHIUM B18 LTA2
800036	BLOQUE LITHIUM B18 LTB2
800037	BLOQUE LITHIUM B18 HTA3
800038	BLOQUE LITHIUM B18 LTA3
800039	BLOQUE LITHIUM B40 LTB1
800040	BLOQUE LITHIUM B18 LTBL1
800041	BLOQUE LITHIUM B18 LTC1
800042	BLOQUE LITHIUM B18 LTBL2





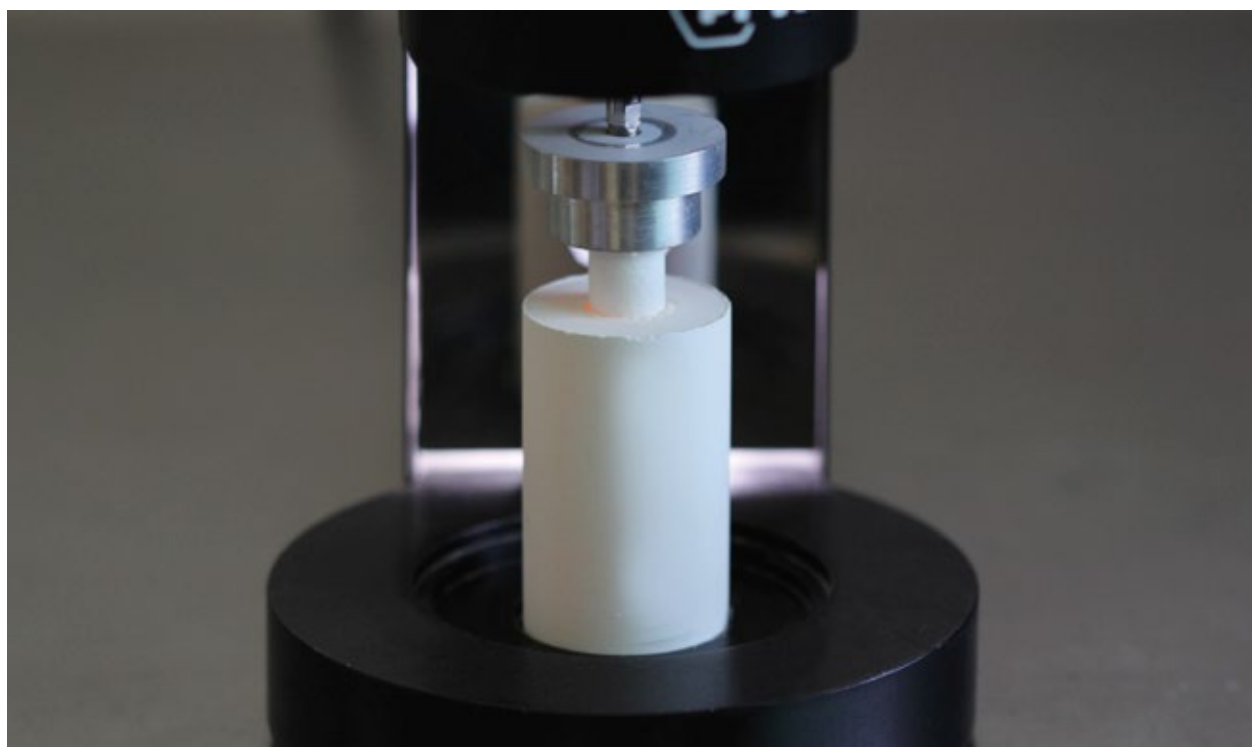
Investment Casting Powder

It's used for creating dental restorations based on lithium disilicate glass-ceramic. Composed of powder and liquid, it is mixed in an electric vacuum spatulator for 1 and a half minutes, from 350 to 600 rpm, to obtain the correct consistency. Setting time is 30 minutes. Lithium YZR® cast package contains one pack of powder (100 g) and two packs of liquid (9 ml and 17 ml).

TEMPERATURE CHART

Initial temperature _____ 800 °C (1472 °F)
 Rate of increase _____ 60 °C/minute (140 °F/minute)
 Final temperature _____ 935 °C (1715 °F)
 Dwelling time _____ 15 minutes
 Pressing time _____ 1 minute

ITEM: 800062



To successfully do an injection of lithium disilicate glass-ceramic, the cast must be placed into a PF KEEP® press, or a press furnace.





**Silicon cylinder
(100 g, 3.5 oz)**

Ideal for small cases, it has a capacity for up to four units and 100 g of investment cast.

ITEM: 800105



**Silicon cylinder
(200 g, 7 oz)**

It offers a maximum capacity for six units or two bridges for 3-units.

ITEM: 800108



Plungers

Disposable injection casts with a 13.2 mm diameter, they can be used for 100 g and 200 g cases.

ITEM: 900071



Base(100 g, 3.5 oz)

This aluminum column support has a diameter of 43.1 mm (1.7"), a useful aid in preventing spillages of the investment casting mix.

ITEM: 800109



Base (200 g, 7 oz)

This aluminum column support has a diameter of 63.5 mm (2.5").

ITEM: 800110



Ceramic fiber

A fibrous pad useful for handling dental restorations of lithium disilicate glass-ceramic, zirconia, or metal-ceramics. It substitutes the use of pine-tar holders or other costly alternatives.

ITEM: 800067



Lithium YZR® Key

The Lithium YZR® Key is a useful aid in properly adding in sprues, which must be placed in at 45° angle. There are two Key sizes, for 100 g and 200 g injection cases.

ITEM: 800045 100 g

ITEM: 800046 200 g



Yellow Lithium YZR® Diamond Paste

The abrasive polishing past extra-fine grit (3 micron), contained in a 5 g syringe

ITEM: 800069

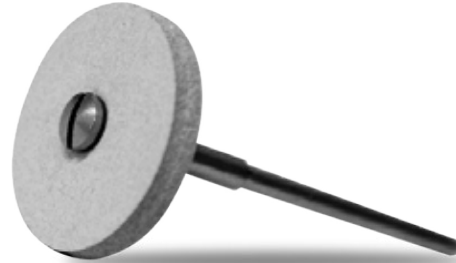


Polishing Kit

ITEM: 800025

White Silicone Rotary Disc

Milling tool whose function is to grind and smooth out the restoration leaving behind an even, and seamless surface, free of any roughness or irregularity.



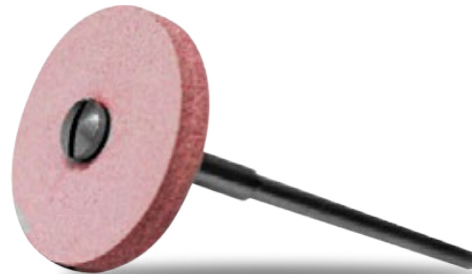
Diamond-tipped Rotary Drill

Fine milling tool to continue working and smoothing out the restoration in hard-to-reach areas which the White Silicone disc cannot reach.



Pink Rotary Disc

To follow up on the previous polishing steps with initial buffing work.



Pink Rotary Drill

It's the fourth step to polish and glossy.



Robinson-Type Brush Rotary Disc

For final buffing. It penetrates and finely permeates the Lithium YZR® Diamond Paste, achieving a lifelike and glossy finish.



POLISHING FINISHED-





LUSTRE COLOR KIT
Lithium YZR®

ITEM: 40064

www.clemde.com



Lustre Color Kit®

Lithium YZR®

This universal make-up kit counts on a system of ceramic bases with low fusion (750 °C, 1382 °F) for making-up, staining and glazing restorations in lithium disilicate glass-ceramic, zirconia, and metal-ceramics, any with a coefficient of thermal expansion (CTE) of $6.9 - 13.3 \times 10^{-6} \text{ K}^{-1}$. It provides a great 3D technique, achieving the aesthetic triad: Chrome, Hue, and Value.

Lustre Color Kit® Lithium YZR® contains 12 individual ceramic masses: 1 neutral glaze, 4 bodies for A, B, C, and D Groups, 6 color masses (white, yellow, blue, gray, brown, black), and one pink mass for gums, each contains 3 g and 10 mL of liquid glaze, ready to use to its excellent consistency, they can be diluted using Liquid Color or their intensity lessened using Neutral Glaze Paste.



Liquid Color

This liquid is specially formulated to work with the Lustre Color Kit® Lithium YZR®, to dilute color masses, and attain the desired consistency.

ITEM: 800080



ITEM: 600008

No. 20 Brush

The no. 20 Brush is specific for achieving makeup techniques. Due to its ultrafine tip, the technician can apply any desired color glaze with precision. Counting on an innovative design, the Brush is made of natural Kolinsky sable hairs.





Yellow

ITEM: 800055

Yellow is concentrated to obtain B colors, and intensify details in A2 and B2 colors.



Blue

ITEM: 800056

Blue provides opalescence, mainly for mesio and disto incisal angles, as well as for ridges.



Pink

ITEM: 800060

Pink is for characterizing at the gingival level.



Grey

ITEM: 800057

Grey is for diminishing value, and provides depth through shading.



Black

ITEM: 800059

Black helps capture cavity and fracturing effects.



White

ITEM: 800054

White is for incisal edges, the cuspids, and for heightening values throughout a restoration.



Glaze

ITEM: 800051

A universal glaze, to obtain brightness in lithium disilicate glass-ceramic, zirconia, and porcelain.



Brown

ITEM: 800058

Brown helps capture cavity and fracturing effects.



A Base

ITEM: 800052

Color to attain A2, A3, A3.5, and A4 tones, according to the most used colorimeter in the market.



B Base

ITEM: 800044

Color for attaining B2, B3, and B4 tones, according to the most used colorimeter in the market.



C Base

ITEM: 800043

Color for attaining C2, C3, and C4 tones, according to the most used colorimeter in the market.



D Base

ITEM: 800053

Color for attaining D2, D3, and D4 tones, according to the most used colorimeter in the market.



PF KEEP®



PF KEEP® System

The PF KEEP® System is designed for the injection of PF KEEP® resin, ideal for creating bars and implant attachments. Any restorative work done with the pneumatic Injection Press and Lithium YZR® dewaxing furnace, D Waxing PRO 2.0 is sure to result in perfect mold injections.



ITEM: 90000



PF KEEP® Machine System

An automatic press for the precise injection molding of lithium disilicate glass-ceramic material. It features a manometer, and push-button control over the piston. Its Base is compatible with 100 g (3.5 oz), 200 g (7 oz), and 500 g (17.6) cases.

ITEM: 300161



TECHNICAL SPECIFICATIONS

- Electrical specifications: 110 V | 1.5 W / 2.5 A and 220 V | 11 W | 0.5A
- Exterior dimensions: 12 cm width x 26 cm length x 35 cm height





PF KEEP®

PF KEEP® is a highly engineered polymer, based on polyetheretherketone (also known by its acronym, PEEK). It is a thermoplastic material approved for permanent use in human according to International Standards including ISO 13485: 2016 (quality in manufacturing), ISO 10993: 2021 (biocompatibility), ISO 20795-1:2013 (Dentistry-Base polymers - Part 1: Denture Base Polymers) and USP 88 Class VI (toxicity). Each presentation contains 45 g (1.6 oz) of pellets.

PHYSICAL PROPERTIES

Aqueous absorption _____ 5 $\mu\text{g}/\text{mm}^3$
 Density _____ 1.31 g per cm^3
 Porosity _____ NO

MECHANICAL PROPERTIES

Resistance to fracturing _____ 10846 J/m^2
 Flexural modulus _____ 3530 MPa
 Tensile strength _____ 162 MPa
 Coefficient of friction _____ 0.18
 Ultimate tensile strength _____ 7.0 MPa/m^2

THERMAL PROPERTIES

Thermoplastification _____ 340 ° C (644 ° F)

CHEMICAL PROPERTIES

Solubility _____ 0.04 $\mu\text{g}/\text{mm}^3$

ITEM: 900001



ADVANTAGES

- METAL- FREE
- BIOCOMPATIBLE
- ULTRALIGHT
- MINIMAL HEAT CONDUCTION
- 3530 MPA OF RESISTANCE TO FRACTURING





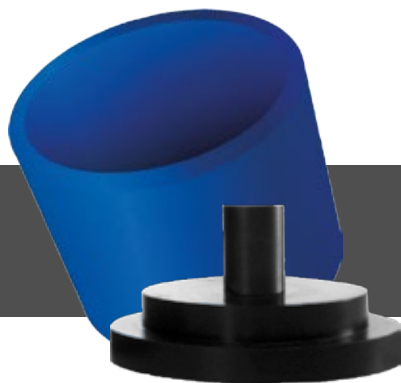
Bars for Implants



PF KEEP® resin is mainly used for the creation of implant bars. PF KEEP® provides a benign treatment of the surrounding soft tissues, as well as a high absorption of axial loads to the implants.

PF KEEP® provides a capacity for friendly coloring, characterizable using ceromers, others resins, acrylics, and lithium disilicate glass-ceramics. An unprecedented, high level of aesthetic value and functionality can be achieved for the patient.

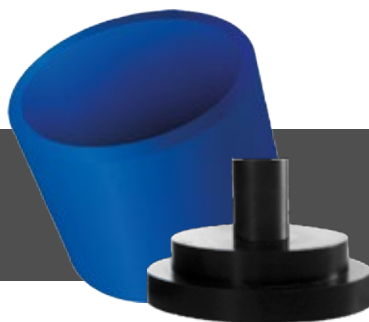




Silicon Base and Cylinder (500 g)

ITEM: 900043

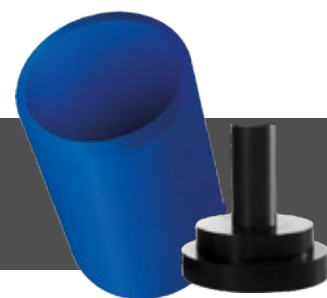
This Base is for creating bars and large structures.



Silicon Base and Cylinder (200 g)

ITEM: 900043

This Base is for creating partial bars.



Silicon Base and Cylinder (100 g)

ITEM: 900043

This Base is for customized attachments.



PF KEEP® Kit for Horizontal and Vertical Attachments

ITEM: 900025

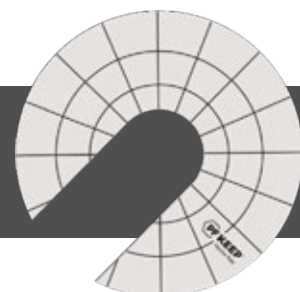
Semi-precise attachments in horizontal and vertical position. Contains 3 pairs.



PF KEEP® Kit for Spherical Attachments

ITEM: 900026

Semi-precise spherical attachments. Contains 2 bars, with 4 entry points.



PF KEEP® Key

ITEM: 900010

This vector Key is a useful aid in properly adding in sprues. They must be placed starting from the injection center, considering a uniform and symmetrical length.



Plungers

Disposable injection casts with a 26.5 mm diameter (1.04"), they can be used for 500 g cases.

ITEM: 900012



ITEM: 900014

PF KEEP® Investment Casting Powder

PF KEEP® cast is a specially formulated powder, used for creating dental restoration structures in PEEK. Composed of powder and liquid, the ingredients should be mixed together in an electric vacuum spatulator for 1.5 minutes, from 350 to 600 rpm, for the right consistency. Setting time is 30 minutes. One bag of PF KEEP® cast contains one pack of powder (100 g) and two packs of liquid (9ml and 17 ml).

Initial temperature _____ 15 °C - 20 °C (59 °F - 68 °F)
Rate of increase _____ 17 °C/minute (62.6 °F/minute)
Final temperature _____ 850 °C (1562 °F)





Disk for the CAD/CAM System

PF KEEP® Disk for CAD/CAM dental therapy is yet another PF KEEP® product. It is used in the fabrication of implants and metal-free removable prostheses. Its resemblance to bone, and elasticity have made it suitable for the milling of larger structures.

Disk come in 14 mm, 16 mm, 18 mm, 20 mm, and 22 mm in height (0.55", 0.63", 0.71", 0.79", and 0.87" respectively). Disk can also be made available in customized measurements. It is recommended to mill PF KEEP® Blocks at 650 rpm.

Disk diameter coincides with the standard milling tools in the market. All Disk sizes have a circumference of 98.5 mm, which helps avoid wastage of material.

900088	IVORY LIGTH 18 mm	900095	IVORY LIGHT 22 mm
900089	ALBORI LIGTH 20 mm	900096	IVORY LIGTH 16 mm
900090	PINK 22 mm	900097	IVORY LIGTH 14 mm
900091	PINK 20 mm	900098	IVORY 22 mm
900092	PINK 18 mm	900099	IVORY 20 mm
900093	PINK 16 mm	900100	IVORY 18 mm
900094	PINK 14 mm	900101	IVORY 16 mm
		900102	IVORY 14 mm



EZ MODELING[®]



EZ MODELING[®]
Polymethylmethacrylate and primers · Modeling Resin
CONT. NET. 3 g

EZ MODELING[®]
Polymethylmethacrylate and primers · Modeling Resin
CONT. NET. 3 g

EZ Modeling® Resin

A fluid, photopolymerizable resin composite ideal for working in acrylic glass (polymethacrylate). This is a castable, transparent thermoplastic perfect for the precision modelling of both fixed and removable prostheses. **EZ Modeling® is like having a 3D printer in your hands**

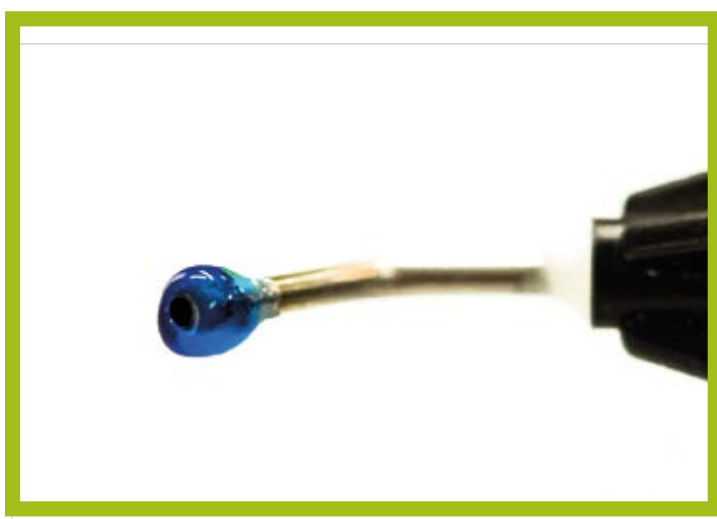
ITEM: 200002





FEATURES

- Incomparable accuracy
- Does not drip, no residues
- Castable
- Easy to handle
- Photopolymerizable
- No contracting
- Each plunger syringe contains an infusion cannula, and 3 g of resin



ADVANTAGES

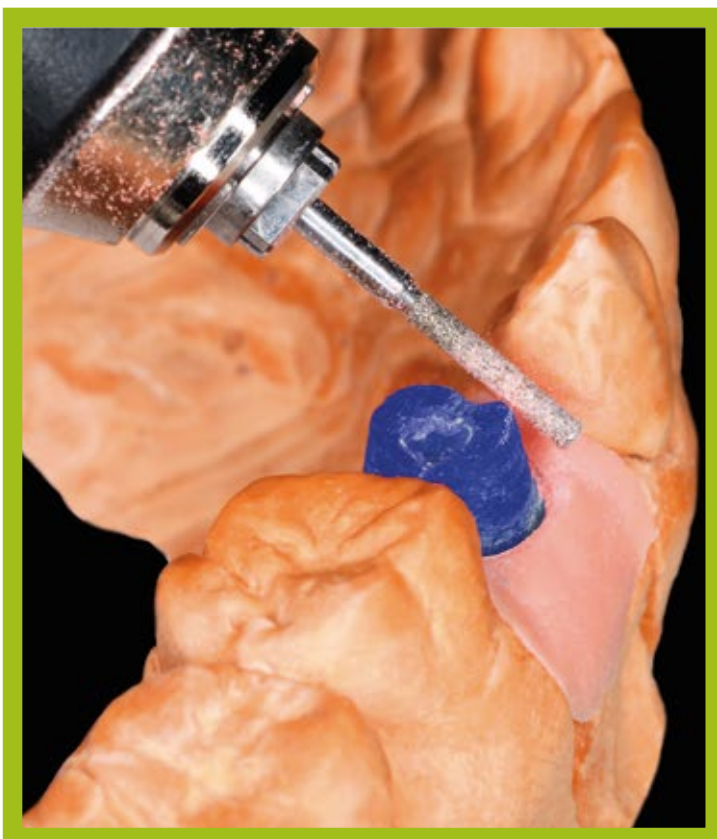
- Avoid duplicating models
- Stability and precision in all your modeling
- Perfect castings, free of residues
- Direct application upon original models
- Impeccable exactitude

APPLICATIONS

- Modeling of copings
- Modeling of both fixed and removable bridges
- Modeling of precision attachments
- Modeling of crowns and bridges
- Creating metallic hard retainers and direct occlusal rests
- Soldering union of structures

STORAGE

- Store material from 4 °C to 254 °C
- Do not leave exposed to sunlight, or sources of heat
- Do not use after expiration date



3D CLEMDE

3D RESINS

ITEM: 300166

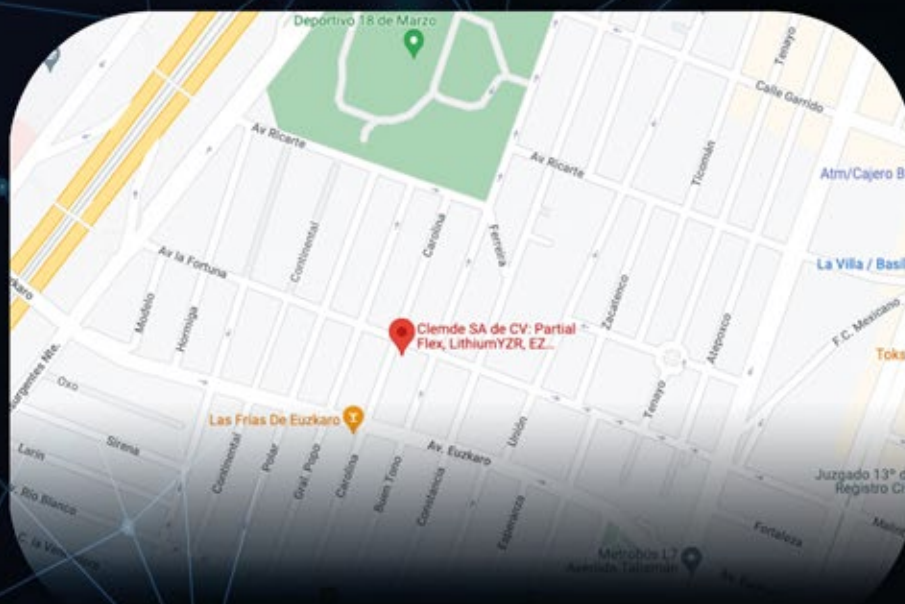
ITEM: 300168


ITEM: 300167




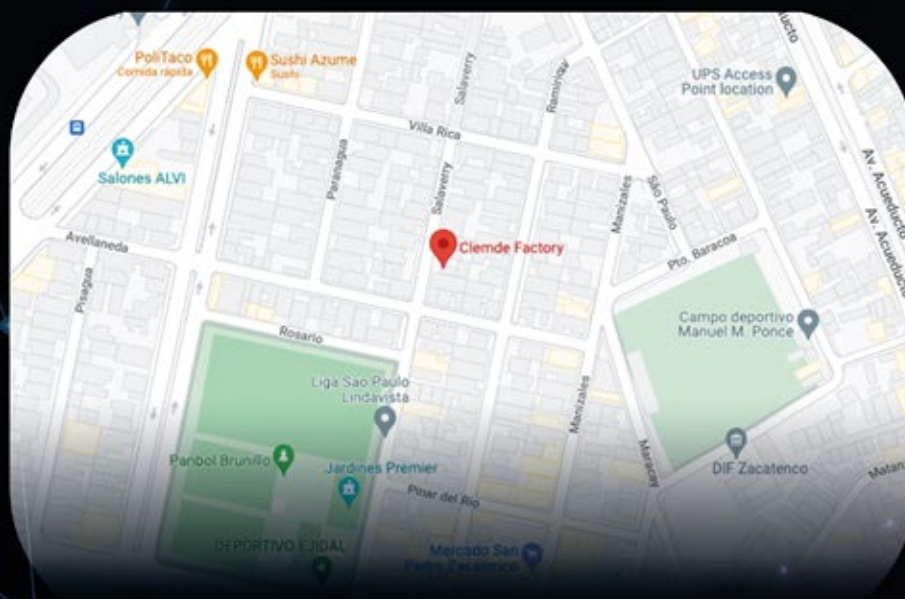
COME AND MEET US


 Clemde



 Av la Fortuna #136, Industrial, Gustavo A. Madero,
07800 Ciudad de México, CDMX (Mexico City)

 Clemde



 Salaverry 1189, San Pedro Zacatenco,
Gustavo A. Madero, 07360 Ciudad de
México, CDMX (Mexico City)

 @clemdedental

www.clemde.com
Avenida La Fortuna No. 136
Colonia Industrial
Delegación Gustavo A. Madero
C.P. 07800
Ciudad de México (Mexico City)
Tel. +52 (55) 35377103
+52 (55) 55771374